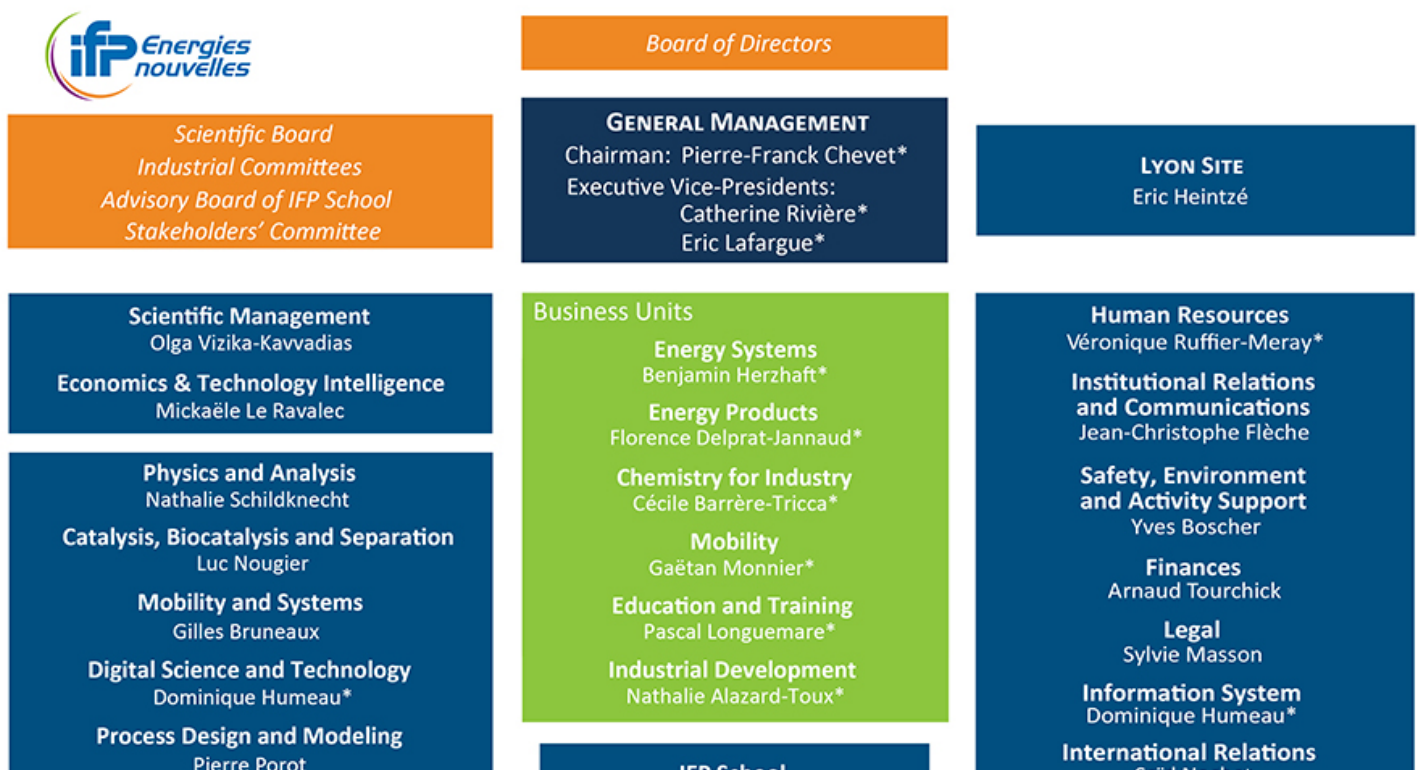


A MATRIX ORGANIZATION

The implementation of R&I programs at IFPEN is underpinned by a matrix structure: projects are conducted within multidisciplinary teams made up of personnel from the different research divisions and functional divisions.

The business units are responsible for developing and monitoring R&I programs, and for their transfer to industry.

This organization brings flexibility and efficiency, by allowing skills to be mobilized on the basis of needs. It also provides an opportunity to combine talents, since multidisciplinary is a genuine source of innovation.



Click to enlarge image

Organization

Link to the web page :